



DMP Electronics Inc.

8F, No 12, Wu-Quan 7 Rd., Wu Gu Industrial Park
Wu Gu Xiang, Taipei 248, Taiwan R.O.C.
TEL: 886 2 2298 0770 FAX: 886 2 2290 2335

The illustration of installing Windows XP to eBox-3300

---ACCESSORY---

- USB floppy
- 1.44" Disk
- USB Keyboard/Mouse (or PS/2 Keyboard/Mouse)
- IDE Cable
- CD-ROM (or USB CD-ROM)
- Storage device: CF Card 2GB (or above) or 2.5" Hard Disk.
- eBox-3300 Windows XP driver Zip file. (Please download from website)

---THE SUPPORTING MODEL OF USB FLOPPY---

However, not every external USB floppy supports Windows XP installation. Some of them lack Txtsetup.sif file. It would make USB drive is not detected when you install Windows XP.

The following USB floppy disk drives **are supported** for use during Windows XP installation:

Plug and Play ID	USB floppy disk drive model
USB\VID_03EE&PID_6901	Mitsumi
USB\VID_057B&PID_0000	Y-E Data; Sony part number 09K9835
USB\VID_0644&PID_0000	TEAC; IBM option part number 27L4226, FRU 05K9283

The following USB floppy disk drives **are not supported** during Windows XP installation:

Plug and Play ID	USB floppy disk drive model
USB\VID_03F0 &PID_2001	HP
USB\VID_054C &PID_002C	Sony
USB\VID_057B &PID_0001	Y-E Data
USB\VID_0409 &PID_0040	NEC
USB\VID_0424 &PID_0FDC	SMSC

We have to use USB floppy (Mitsumi; Y-E Data; Sony 09K9835; TEAC; IBM 27L4226, FRU 05K9283) which support Windows XP installation.

For more information, please check Microsoft website <http://support.microsoft.com/kb/916196>

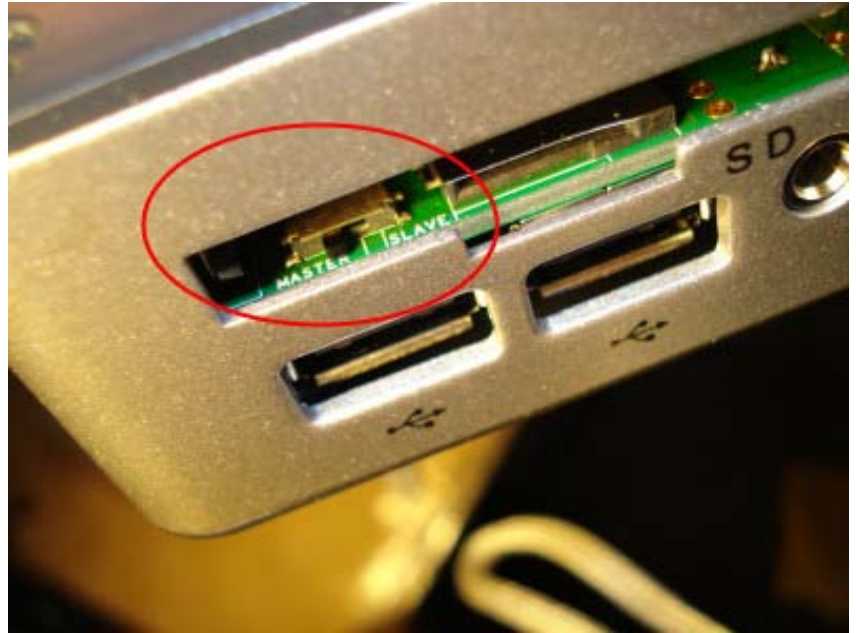
---TEST SOFTWARE---

- Windows XP Professional (English Version)

SETUP READY AS FOLLOW

If we want to use Compact Flash (CF card), we need to set it to be the “master” device. Please set the jump in front of the slot. Put it to the left side.

We recommend you use the storage (CF card, embedded disk) which with “Ultra DMA mode”.



Put CF card to slot.



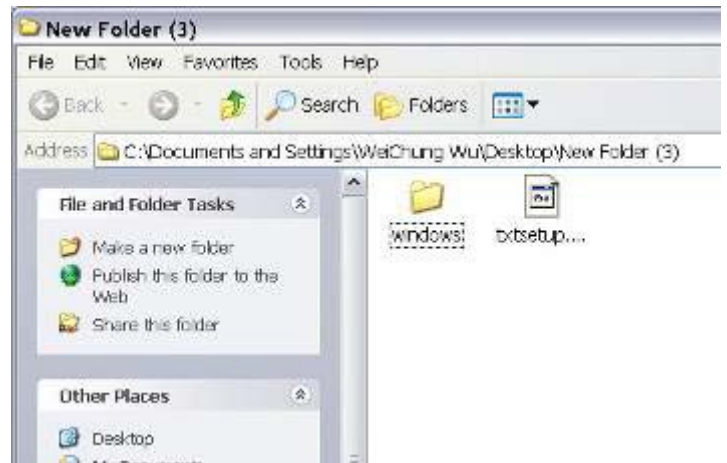
Prepare a external **USB floppy** and a disk.



Connect USB floppy to workstation (desktop)



Copy a file (**txtsetup.oem**) and a folder (**windows**) to UPS floppy. These files are IDE driver for eBox3300. You can download “**eBox-3300 IDE driver for Windwos XP**” from following



address http://www.compactpc.com.tw/download_drv.htm

Prepare a Windows XP CD and an external USB CD-ROM or DVD-ROM.



Plug external USB floppy and external USB CD-ROM to eBox-3300 by USB port.



After connect key board, mouse, VGA line, ethernet line, and power line, turn one the power switch.



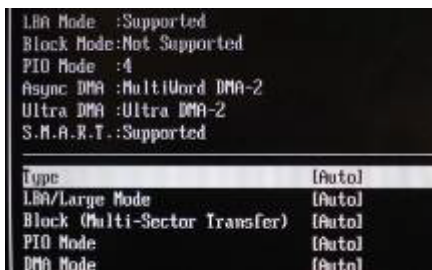
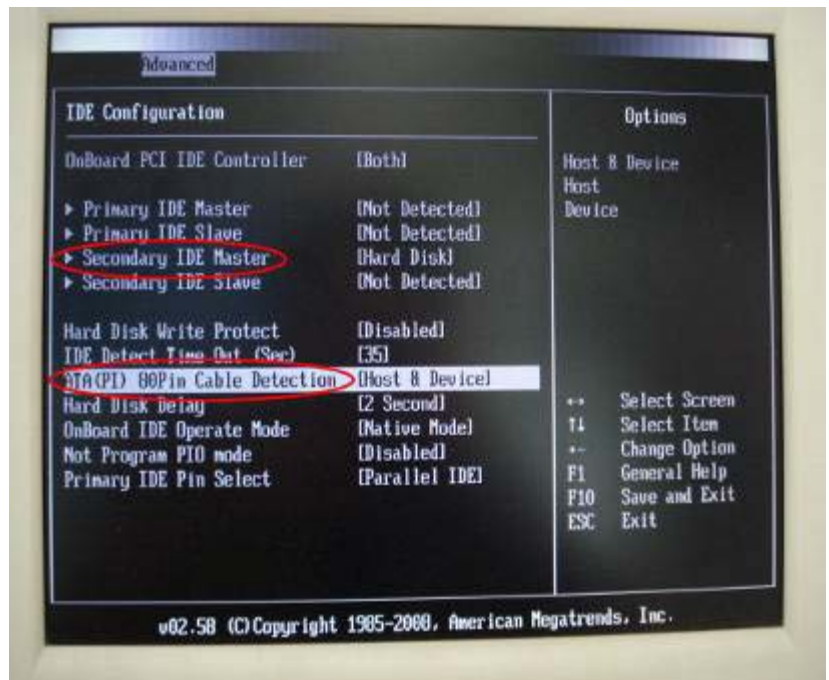
After turn on the power, press '**Delete**' instantly. We will enter a BIOS setting screen. Setting BIOS can make eBox-3300 have better performance, especially on Windows system.



Go to Advanced → IDE Configuration
→ OnBoard IDE Operate Mode → set
it to “**Native Mode**”



Go to Advanced → IDE Configuration
→ ATA(Pi) 80Pin Cable Detection → set it to “**Device**”. It means the transfer speed will be decided by storage (CF card, hard disk, embedded disk). When we set it, the storage can support up to Ultra DMA-4. If we choose “Host & Device”, it only supports Ultra DMA-2. However, not every cable and storage support Ultra DMA-4. In this situation, we will choose “Host & Device”. We can get more information by entering the item of “**Secondary IDE Master**”. (If we want to check it, we have to reboot, and then the device setting will active.



Go to PCIPnp → PCI IDE BusMaster → set “**Enabled**”



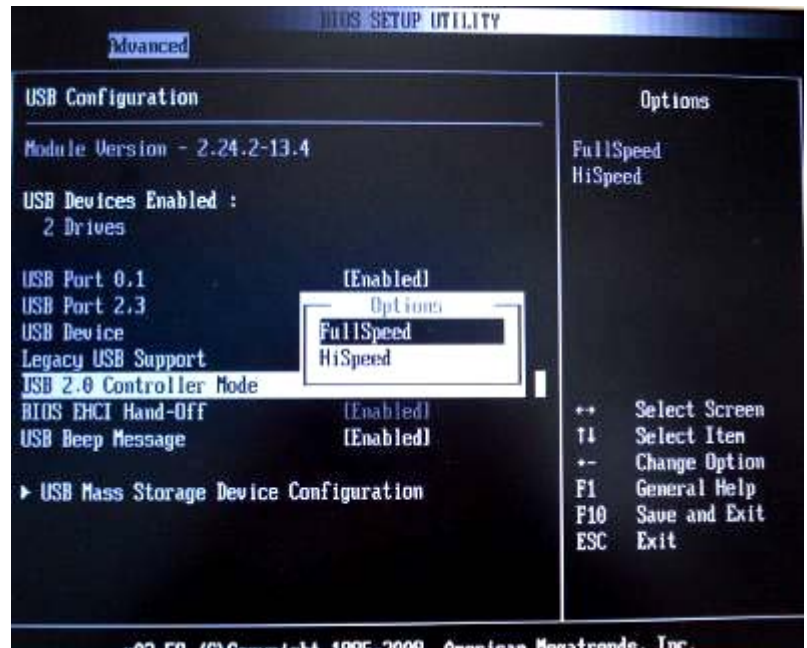
Go to Advanced → USB Configuration

→USB 2.0 Controller Mode → set

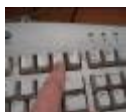
“**FullSpeed**”.Actually, FullSpeed(1.0) is slower than HiSpeed(2.0).

However, when we install XP by CD(DVD)-Rom, there is a detective problem on HiSpeed.

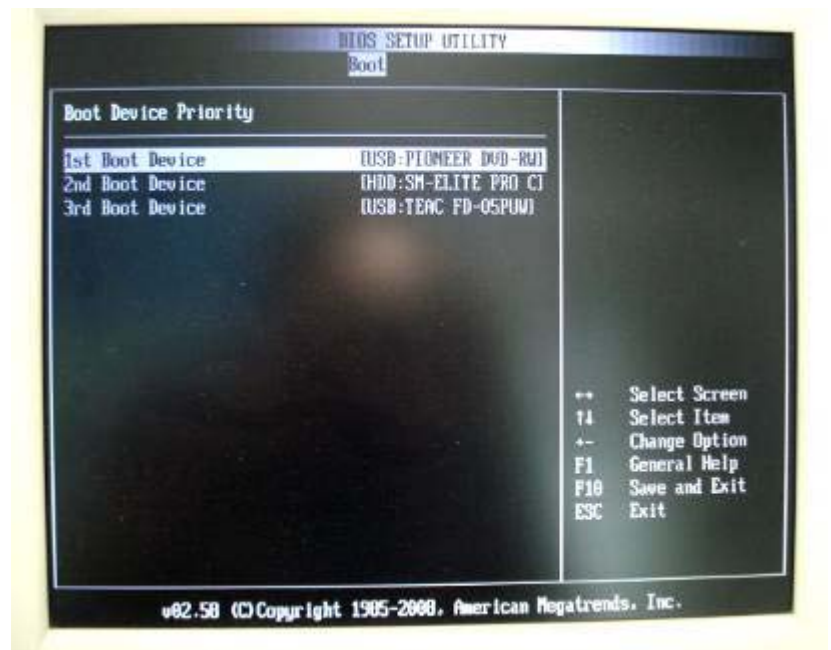
So, we choose FullSpeed temporarily. After we finish installation process, we can change back to HiSpeed.



Go to Boot → Boot Device Priority → set CD (DVD)-ROM be the 1st boot device; set CF card, hard disk and other storage which you want to install XP be the 2nd boot device; set external USB floppy be the 3rd boot device.



Alternative: When eBox is booting, we also can press “**F11**” to choose 1st bootable device.



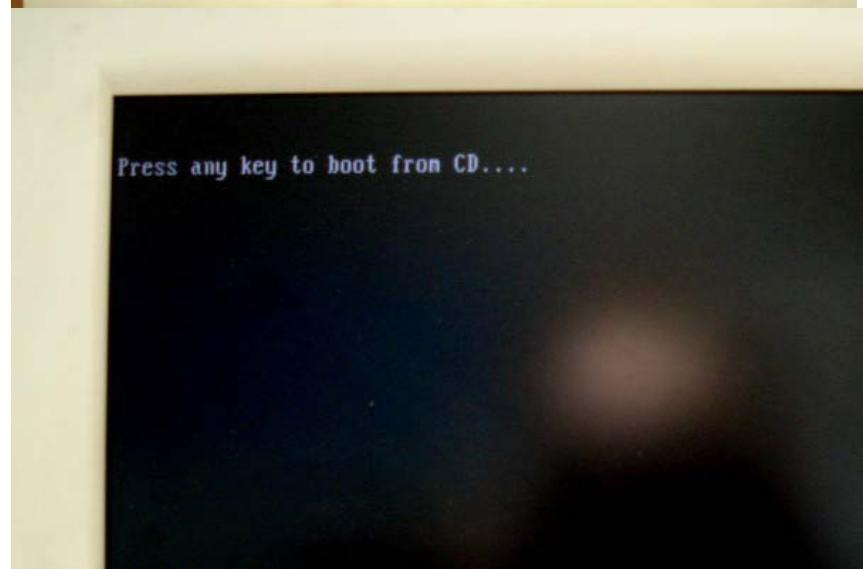
After done all of the setting, go to Exit
→**Save Changes and Exit**. We also can
use shortcut “**F10**” .



Press **OK** to confirm, and then the eBox
will start to reboot.



When eBox starts to boot, we press any



key (Enter, space, number ...etc) to boot from CD.

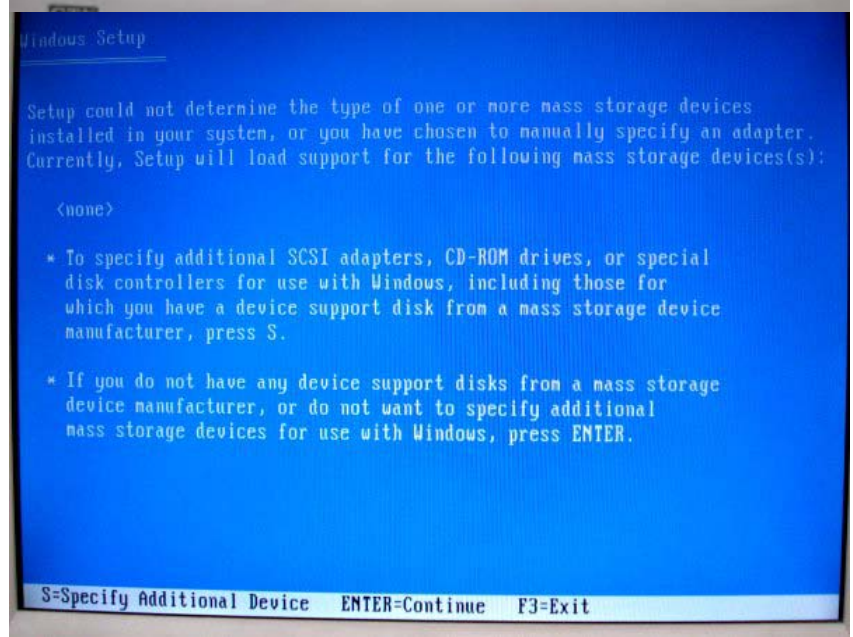
Turn on the computer and press the key F11 to choose CD-ROM booting Selection.



Press “**F6**” when we see this notice on the bottom. It tells us to load third party SCSI or RAID driver.



Press “**S**” when we see this screen. This screen tells us to install additional drivers.



The system will read external USB floppy and find drivers automatically –
Vortex86DX D1010 ATA/ATAPI Controller.
Press “**Enter**” to select it.



We will see this screen again, this time, press “**Enter**” to continue.



Press “**F8**” to agree the license agreement.



Setup the partition of disk (CF card, hard disk, or embedded disk). You can delete (L) or create (C) a partition. It depends on your need. In this case, I use whole disk (one partition).



Choose system you will use. In this case, I use Fat32. If disk space is larger than 32G, fat32 will not support, and NTFS would be the only choice.

For save time, I choose Quick format.



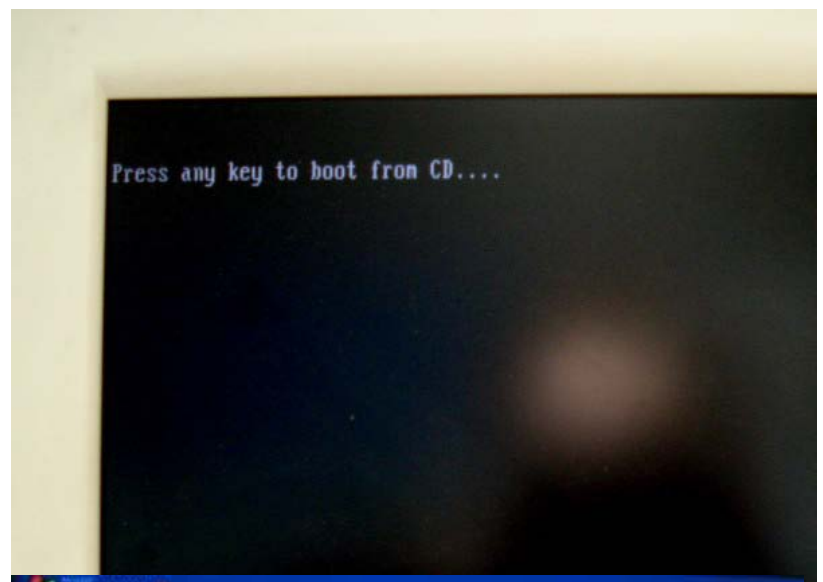
We press "Enter" to continue. It will start to format, and all of your data on the disk will be erased.



After format, Windows files will be copied from CD(DVD)-ROM to disk. Because our USB speed is 1.0, it will take long time to finish this job.



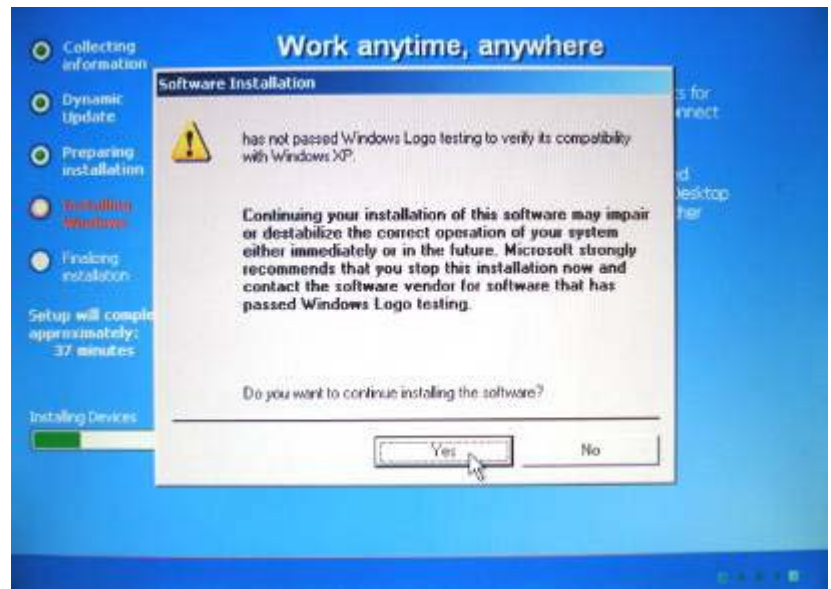
After copy all files, system will reboot. You will see this screen again. This time **don't** press any key. Because files are already in the disk, we don't need to boot from CD(DVD) again.



When you see this screen. The windows are working installation process.



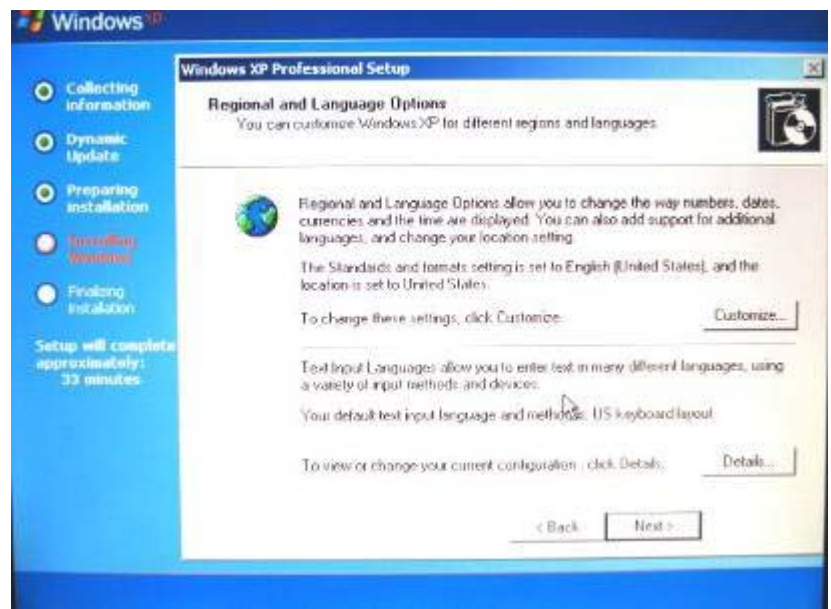
Because the IDE driver has not passed Windows test, it will show this warning screen. However, we still want to install the driver, so press “Yes” to continue.



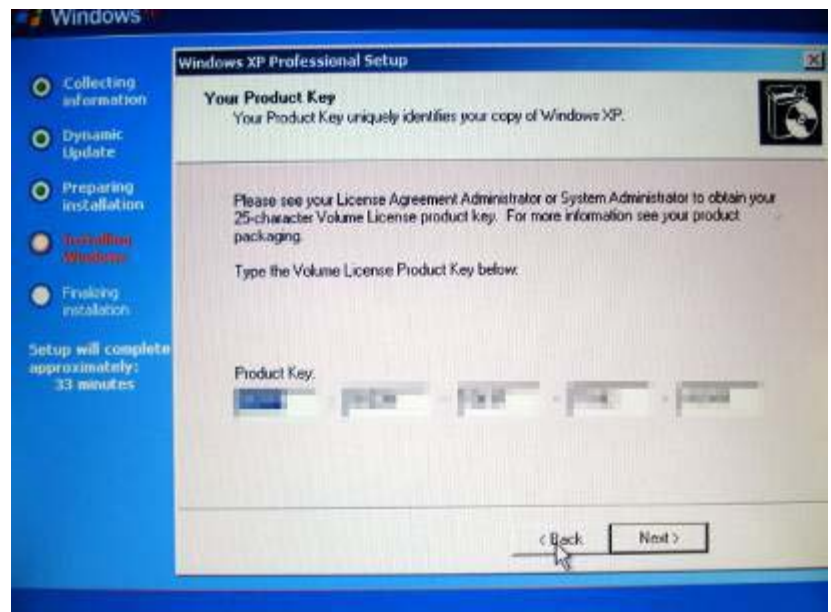
The same, to install the driver, press “Yes” to continue.



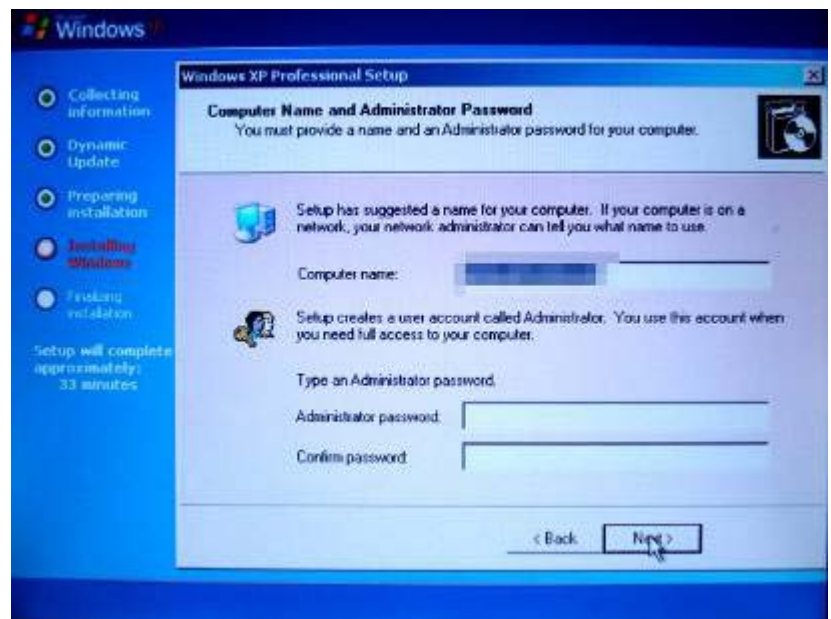
Follow the guide and setup by your need (time area, input...etc)



Input product key.



Setup computer name and account name.
Password is not necessary in this step.



It will reboot. System will detect screen resolution.



Windows XP install successfully! In first boot, it will setup environment for a while.



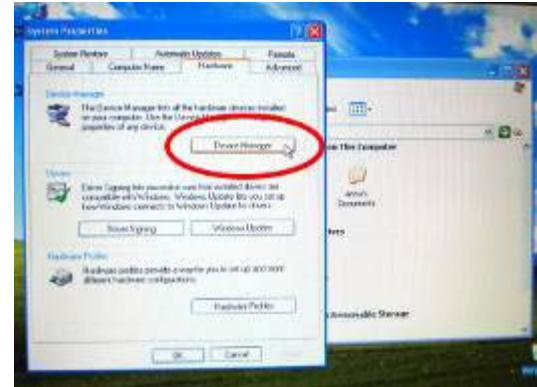
However, this is not the end. To improve video performance and active internet function, We strongly recommend to install specific drivers. You can download (1) **eBox-3300 LAN Driver for Windows XP** ,(2) **eBox-3300 VGA Driver for Windows XP** from following address : http://www.compactpc.com.tw/download_drv.htm After download folder of “**LAN-VxDX**” and “**VGA_Z9s**”, save these to USB flash drive.



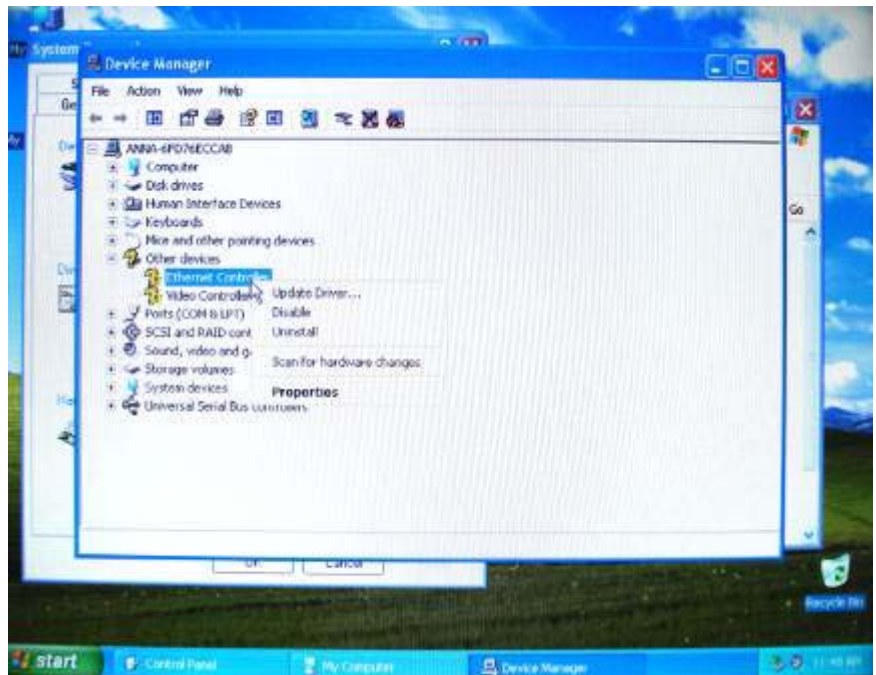
Plug USB flash drive to eBox-3300.



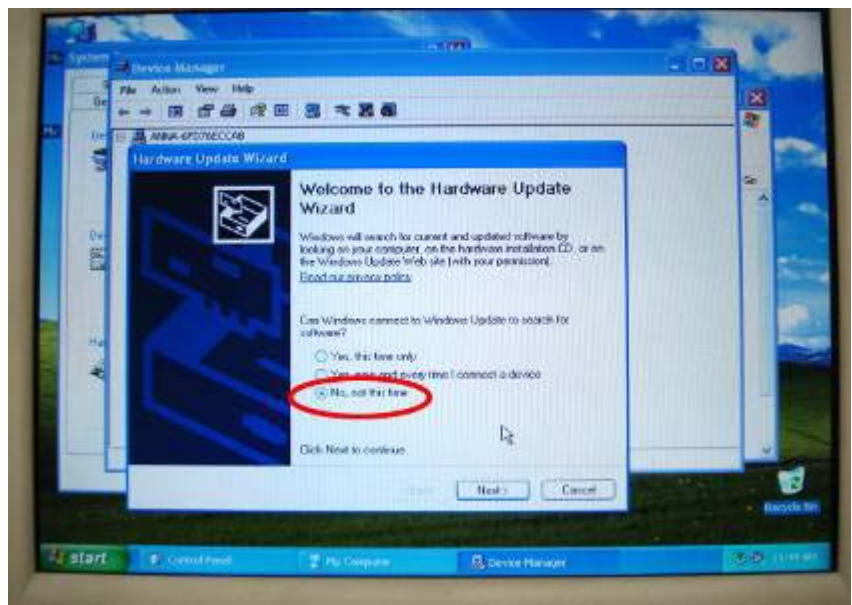
Go to Start → Control Panel → System → Hardware → Device Manager.



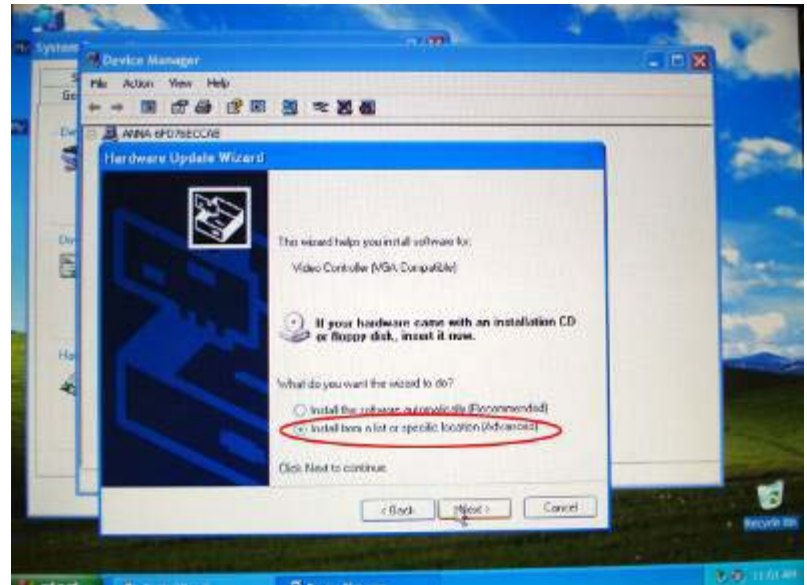
Under “Other devices”, there are two devices with question marks. Firstly, we choose Ethernet Controller. Click **right button** of mouse on this item, and then click left button to choose **Update Driver**.



Choose “No, not this time”

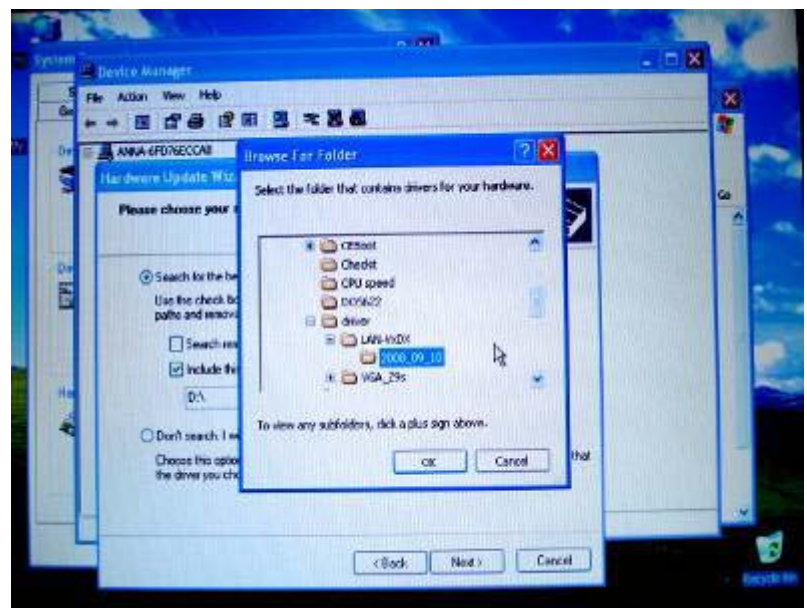


Select **install from a list or specific location (Advanced)**. Press Next to continue.

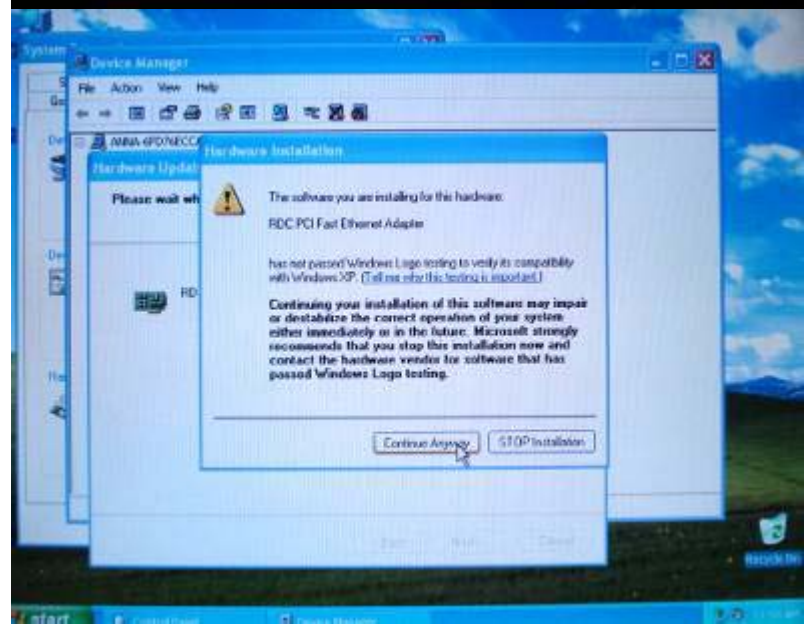
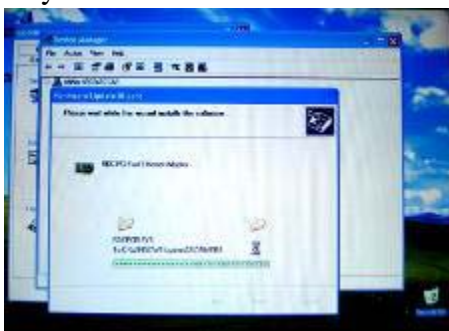


Cancel search removable media, and choose **Include this location in the search**. Then click Browse.

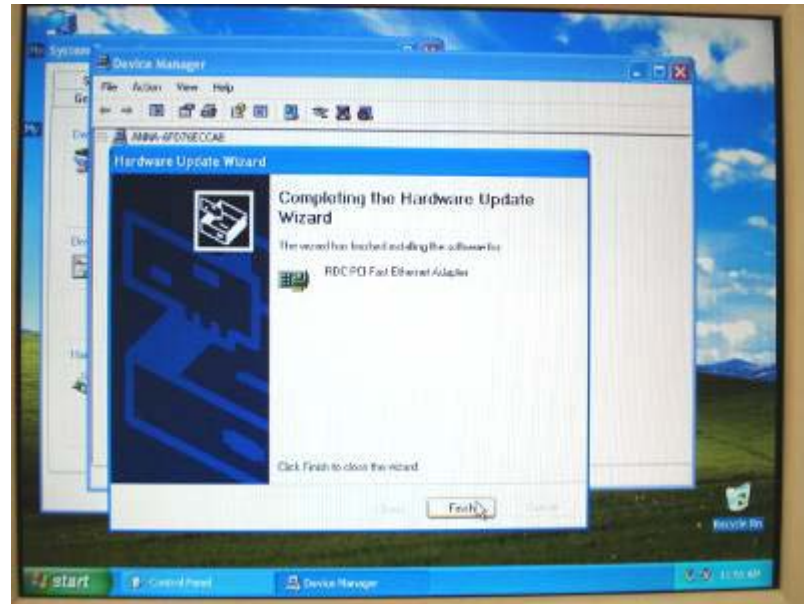
Choose USB flash drive which we save. Go to folder of Lan-VxDx → 2008_09_10. Click OK.



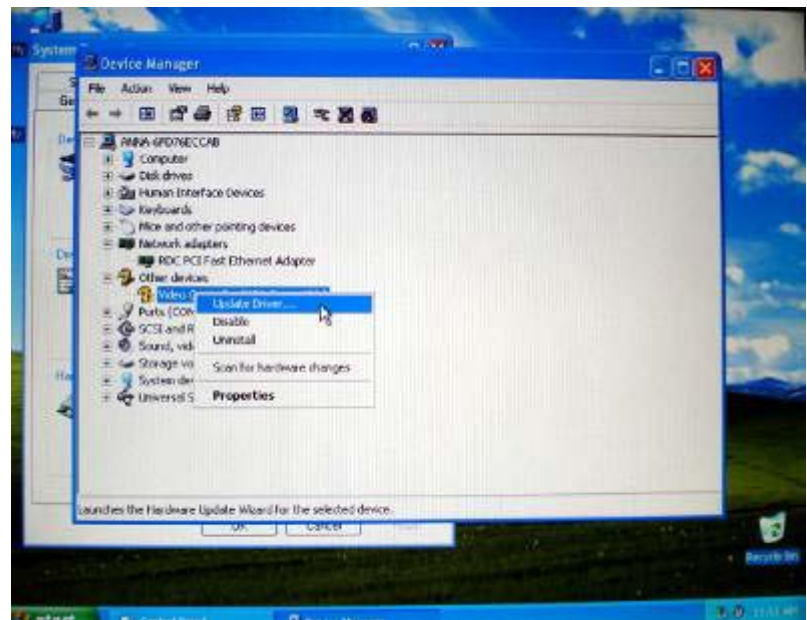
It will show the driver has not passed Windows test. Click **“Continue Anyway”**. Then, we will see files start to be copied to XP system.



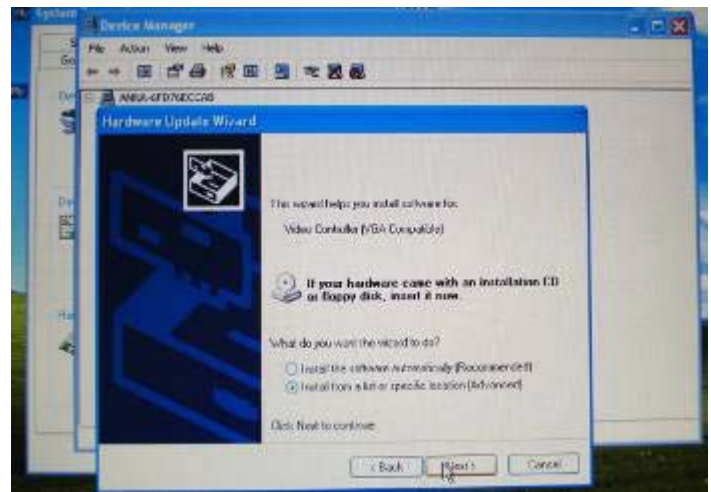
Click Finish to complete. Now, eBox-3300 is ready to connect to internet and browse website!



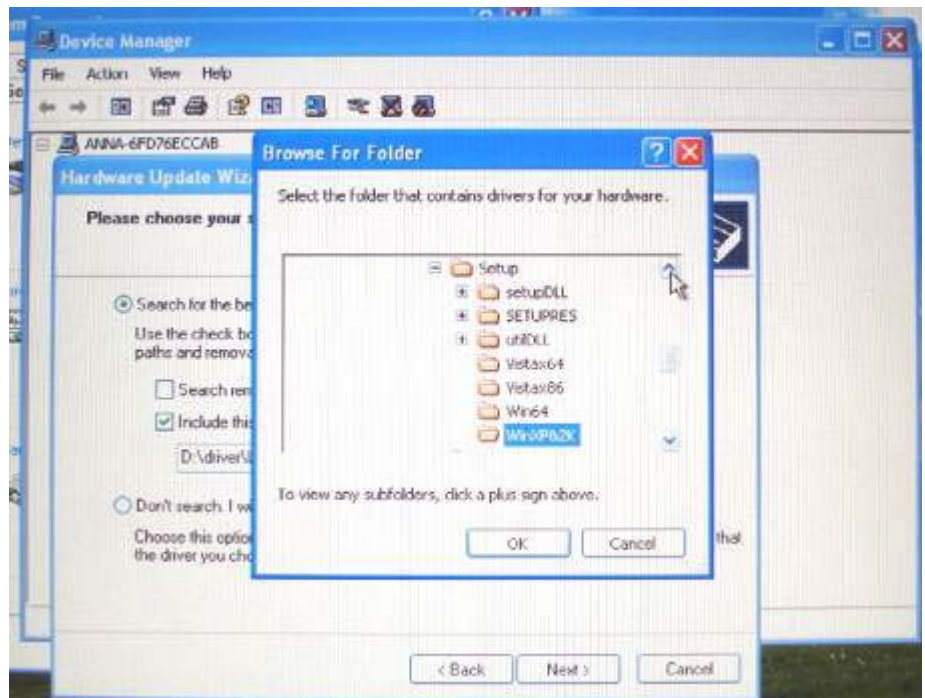
The same, let's update Video Controller



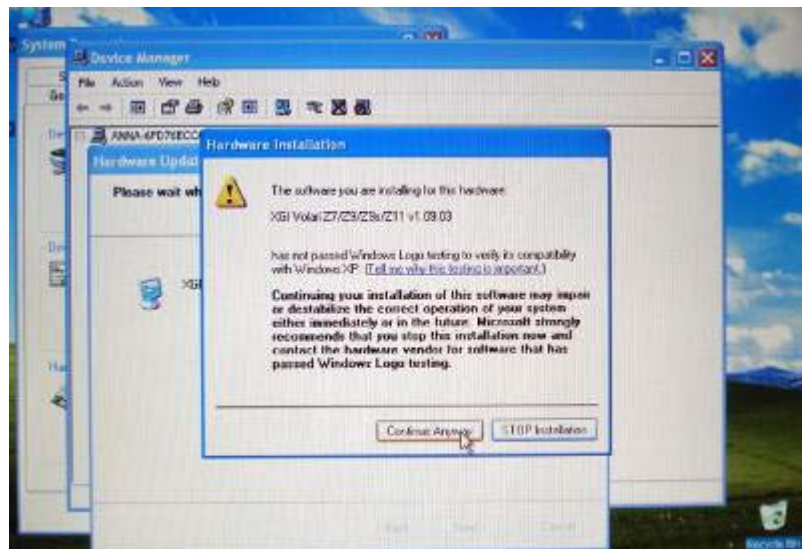
The process is the same as update Ethernet driver.



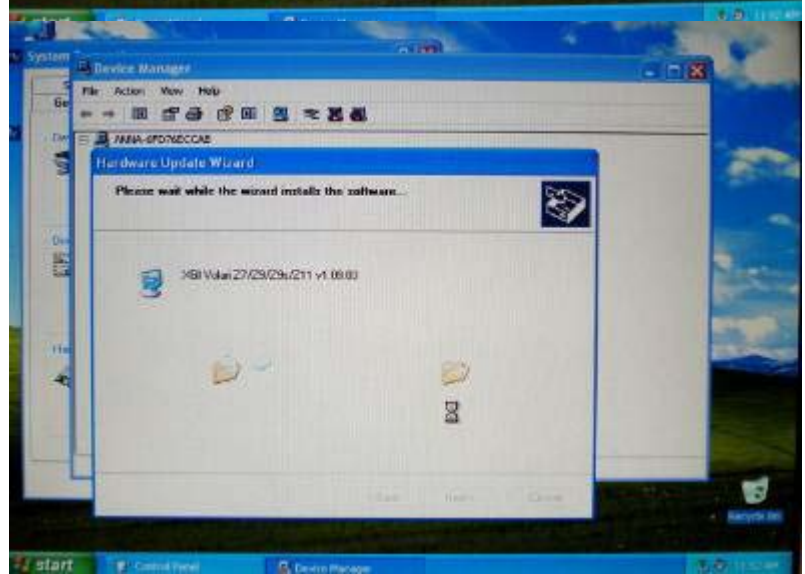
Select VGA_Z9s →
R1.09.03_WHQL → Setup →
WinXP&2K



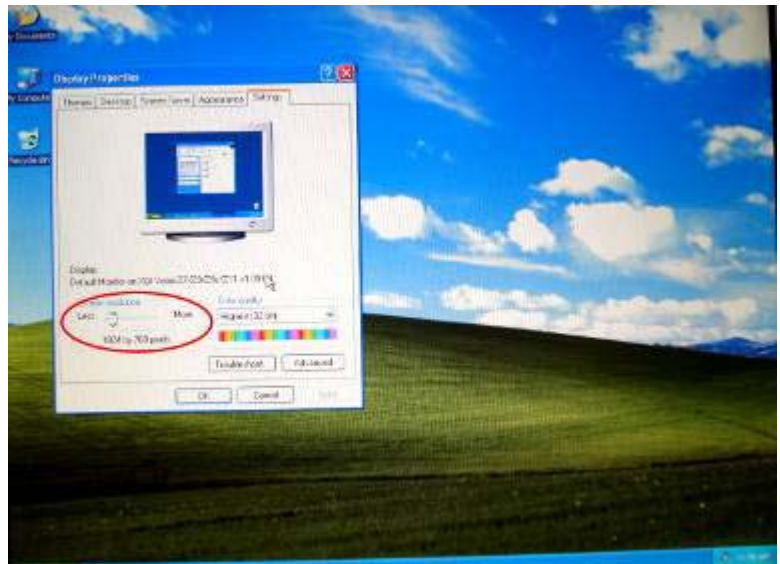
Continue Anyway



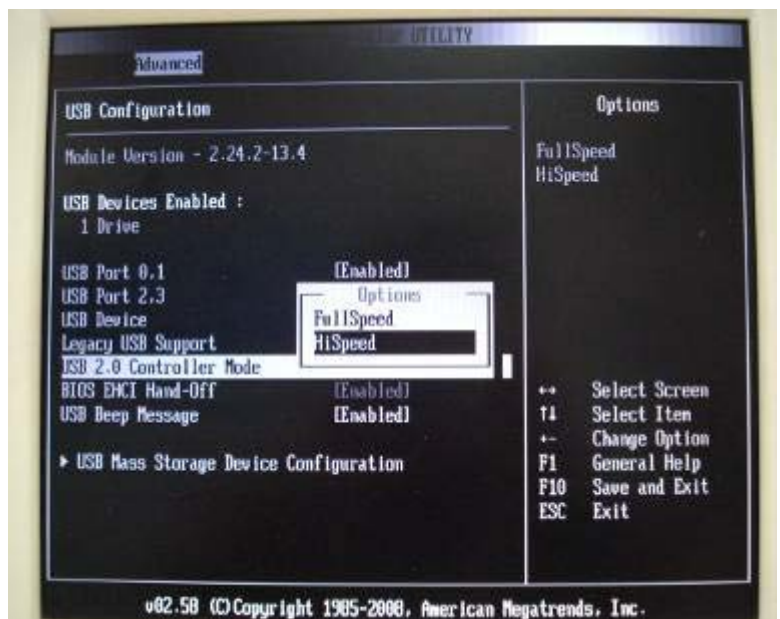
The files start to copy.



After complete the job. We can go to **Display Property** to check. We will see Display is “Default Monitor on XGI Volari Z7/Z9/Z9s/Z11 v1.09.03” and it can support very high resolution now.



Restart eBox-3300 manually and press “Delete” to enter the BIOS setting. Go to Advanced → USB Configuration → USB 2.0 Controller Mode → set “HiSpeed”. Now, eBox-3300 go back to support USB 2.0 with higher transfer speed. By the way, we also can remove Windows XP CD-ROM from the CD(DVD)-ROM.



Congratulation! We done the job of installation Windows XP.

